



**Technical
Specifications**

WEBPIMS

Cloud-based. Real-time. Customizable.

With its user-friendly interface and remote accessibility, webPIMS™ streamlines corrosion and erosion control, enhancing operational excellence and cost-effectiveness.

SOFTWARE FOR ULTRASONIC CORROSION/EROSION MONITORING

Eddyfi Technologies' webPIMS cloud-based, back-end corrosion/erosion data management software allows users to quickly and easily analyze, set alarms for, trend, map, export, and report metal-loss data and rates.

With webPIMS, you can access data from Eddyfi Technologies' permanently installed monitoring systems (PIMS) devices anywhere with an internet-enabled device including a smartphone. Available 24/7, team members can simultaneously review data in real-time and make critical decisions regarding asset integrity, safety, and operational process conditions.

Hardware compatibility:

- microPIMS® Intrinsically Safe
- smartPIMS® 2.0
- matPIMS®
- microTEMP™
- Offshore microPIMS® Intrinsically Safe
- Offshore smartPIMS® 2.0

webPIMS, a cutting-edge cloud-based solution, excels in efficient data management, analysis, and trend monitoring. Empowering users to effortlessly collect, store, and analyze vital data, it ensures unwavering asset integrity and safety.

FEATURES AND BENEFITS

- **Custom alarms:** Alerts based on pre-defined corrosion rate thickness value.
- **Temperature adjusted data:** All thickness readings are temperature adjusted to ensure consistent and accurate data regardless of process changes, startup, shutdown, or upsets.

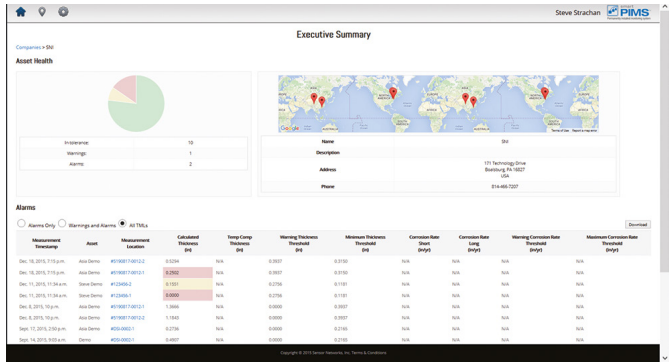


Figure 1: Home page screen showing enterprise-wide macro view, including pie chart with sensor location, status, GPS and latest readings of all sensors.

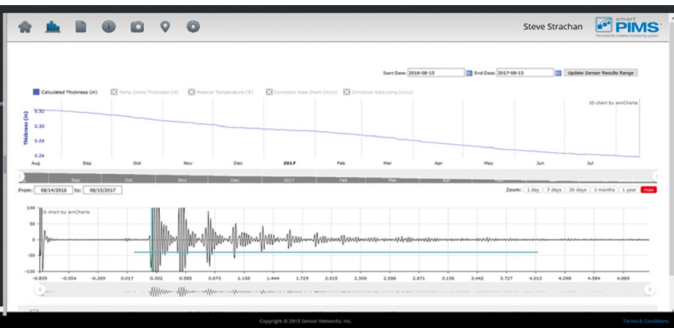


Figure 2: Trending screen graphically shows metal loss versus time, temperature, thickness and digitized RF signals (A-Scans) for each measurement.

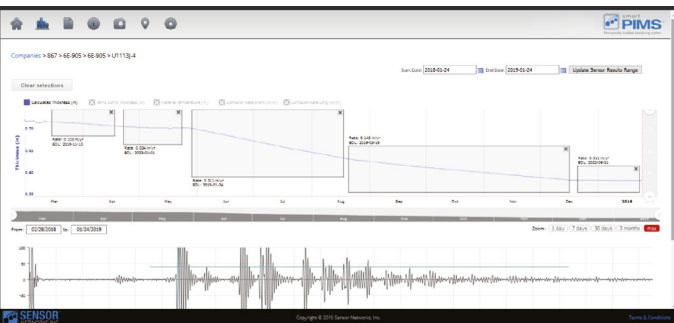


Figure 3: Features like temperature compensation help maximize accuracy of thickness measurements.

- **Effortless data export:** Quickly and easily export data to a XML or CSV file for reporting or mass export to historians/IDMS.
- **Trending:** View and analyze historical data and compare to your operating schedule to optimize process control
- **Optional On-Prem solution:** For those who want to keep their data off the cloud, the On-Prem webPIMS data management system provides a local self-contained/in-the-fence system.
- **Customization:** Add pictures, descriptions, and other notes to show where the sensors are placed and other important information.

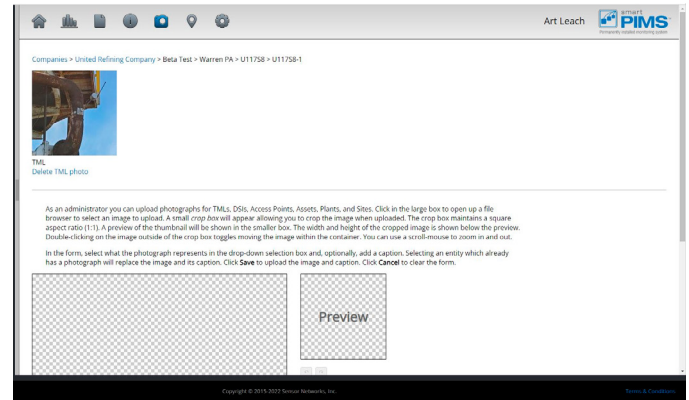


Figure 4: Customization with sensor placement, descriptions and images.

- Cloud-based application with 128-bit AES encryption. (Alternatively available as iPIMS™, an “in-the-fence” local/private server solution with the same software functionality as webPIMS.)
- Hosted on Amazon Web Services by Eddyfi or customer.
- Accessed with login and password.
- Customizable to six layers of hierarchical naming.

The information in this document is accurate as of its publication. Actual products may differ from those presented herein. © 2023 Eddyfi Canada, Inc. webPIMS, smartPIMS, microPIMS, microTEMP, matPIMS, and their associated logos are trademarks or registered trademarks of Eddyfi Canada, Inc. in the United States and/or other countries. Eddyfi Technologies reserves the right to change product offerings and specifications without notice. Eddyfi Technologies is a Previa Business Unit.